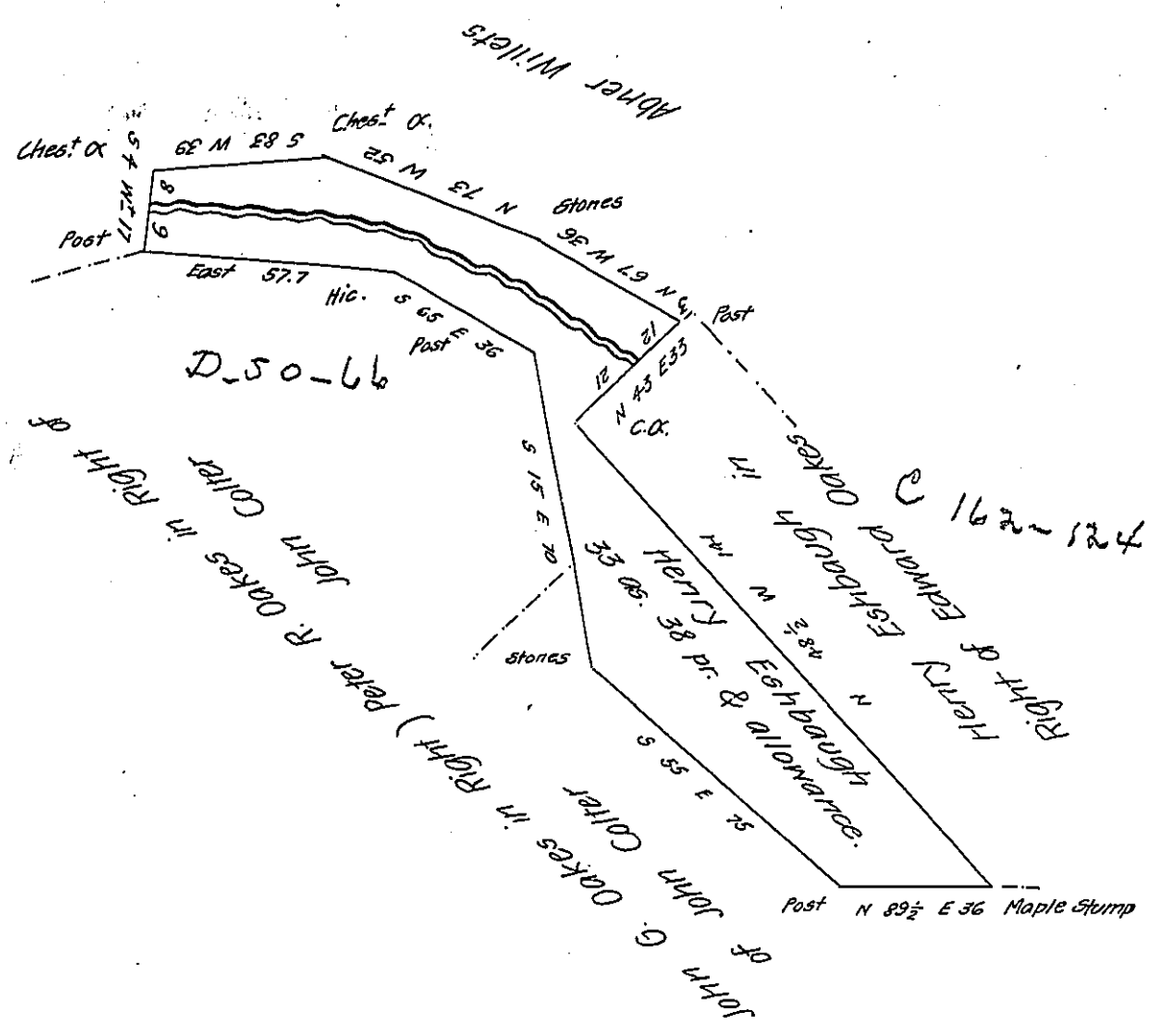


FORM NO 1.



May 2nd A.D. 1861

Surveyed to Henry Eshbaugh the above described tract of thirty three acres and thirty eight perches and the usual allowance of six pr. ct. of land improved adjoining lands of John G. Oakes, Peter R. Oakes, Abner Willets and other land of Henry Eshbaugh Situate on the Chestnut ridge in Burrel township Indiana County By warrant of the 24th day of July A.D. 1860.

Wm. Evans County Surveyor

To William H. Keim Esqr.

Surveyor General.

IN TESTIMONY that the above is a copy of the original remaining on file in the Department of Internal Affairs of Pennsylvania, made conformably to an Act of Assembly approved the 16th day of February, 1833, I have hereunto set my Hand and caused the Seal of said Department to be affixed at Harrisburg, this twenty ninth day of January 1908

Henry Houder
 Secretary of Internal Affairs.